

The Story...

Off the Beaten Path was launched in 2000 by a few artists who had settled in the scenic hill country of DeKalb and Cannon Counties of Middle Tennessee. Their initial intent was to nurture the market for their work, and promote the area, by inviting the public into their studios for a fall tour.



While that annual event remains a primary focus, both the group and scope of its activities have grown. The name "Off The Beaten Path" now describes the tour and affiliation of local artists, skilled in traditional and

contemporary crafts, featured on its stops. They look to community sponsors to support their activities, and strive to give back through ongoing efforts to draw tourists to the area and promote appreciation of fine art and crafts.

Many members were first introduced to the area's natural beauty as teachers or students at the Appalachian Center for Craft on Center Hill Lake in DeKalb County. Others migrated here in their search for a pastoral setting to inspire and empower their creativity. All enjoy the camaraderie of a vital artistic community thriving across a rural landscape aptly described as "off the beaten path."



Collectively and individually, they encourage public enthusiasm for all the arts through community events, service projects, in-school demonstrations, workshops and the highly anticipated *Off The Beaten Path Studio Tour*.

Off The Beaten Path YEARLY CALENDAR OF EVENTS

Learn about the group, meet the members or view samples of our work at any of our free events.

PARTICIPATING EXHIBITORS

Celebration of Craft

*Joe L. Evins Appalachian Center for Craft
Center Hill Lake*

First or Second Saturday in April

SPONSORS AND HOSTS

On The Beaten Path

Spring Exhibit and Fair

Stella Luna Art Gallery/Downtown Smithville

First Saturday in June

PARTICIPATING EXHIBITORS

Smithville Jamboree

Smithville Town Square

Friday/Saturday Nearest the 4th of July

SPONSORS

Book Sale and Benefit for Justin Potter Library

Downtown Smithville

Second Saturday in August

SPONSORS

Empty Bowls Benefit To Combat Hunger

Smithville Town Square

Third Saturday in August

SPONSORS AND HOSTS

Off The Beaten Path Studio Tour

DeKalb County and Cannon County

Last Full Weekend in October

Off the Beaten Path Radio Show and Podcast

WJLE Smithville 101.7 FM and wjle.com

8:30 a.m. First Thursday Each Month

Off The Beaten Path is a member of the Tennessee Association of Craft Artists and the DeKalb County Chamber of Commerce.

To learn more, visit us online



Professionals
in Fine Art
and Craft



Celebrating and Promoting
the Arts in the Center Hill Region
www.offthebeatenpathtour.com

You're invited to
come and explore...



Every October art enthusiasts from all over converge on the Center Hill Lake region of Middle Tennessee to take in the area's breathtaking scenery as they travel town and country, hill and hollow to visit working artists in their studios.

Off The Beaten Path members enjoy national and international reputations as masters of contemporary and traditional crafts. These professional craft artists collaborate to promote appreciation of fine art and craft through community outreach, educational programs and sponsorship of free public events throughout the year.

During the Off the Beaten Path Studio Tour, held the last full weekend of October, they open their studios to the public for a first-hand look at the materials, methods and settings empowering their creativity. This free yearly event is a unique opportunity to meet the artists, discuss their work and purchase or commission original creations in clay, glass, wood, fiber and other media.

For more information, visit the website
www.offthebeatenpathtour.com



Off The Beaten Path ARTISTS DIRECTORY

Louis & Christine Colombari
Clay (Decorative & Sculptural Neo-Primitive Fired)
Cosmic Clay Studio** / Stella Luna Art Gallery*
615.597.6476 / 597.4004
www.cosmic-clay.com

Chery Cratty
Pulp Painter
Red Bow Studio*
www.cherycratty.com
770.530.2022

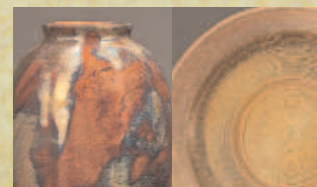
Susan DeMay
Functional and Decorative Stoneware
Creek Ferry Pottery**†
615.597.8867
www.susandemay.com

Tom Fuhrman
Blown Glass, Stained Glass, Awards, Public Art
Fuhrman Glass Studio**†
615.563.5898
www.fuhrmanglass.com

Sherri G
Raku-Fired Clay
Pottery By Sherri G**†
615.597.6528
www.potterybysherrig.com

Rob Harvey
Traditional Wood-Fired Stoneware
Creek Bend Pottery*
615.536.5538
creekbendpottery@yahoo.com

Tim Hintz
Chairs, Rockers, Stools and Tables
Fresh Chairs*
615.597.8770



Randy Johns
Wood (Furniture & Art)
Ideas In Wood*
931.946.2834

Arlene Knaak
Tiled Ceramic Wall Murals
Arlene's Clay Studio*
615.563.6666
www.arlenesart.com

William and Sharon Kooienga
Wood, Sculpture, Spinning and Weaving
Beech Hollow Studios**†
615.536.5567
www.beechhollowstudios.com

Claudia Lee
Handmade Paper and Books
Liberty Paper Mill**†
www.liberty-handmade-paper.com
615.536.5151

Cheryl Ludwig
Fibers/Weaving
Cheryl's Weavings
931-265-2588

Damon MacNaught
Glass/Mixed Media Sculpture
Bareglass Studio**†
217.840.6256
www.dmacnaught.com

Amy Potter
Architectural Ceramics
Creek Bend Studio**†
615-418-6220
www.amypotter.com

Breanna Rockstad-Kincaid
Fibers/Felting
Felt Good Fibers**†
931-284-7947
www.feltgoodfibers.com

Kimberly Winkle
Wood/Furniture†
(615)597-5138

Ed Wooten
Glass - Stained, Fused, Lampworked
Wood - Shaker Boxes
Wooten Glass Works**†
615.563.1571

*Studio open by appointment

†Workshops, classes or individual instruction available

